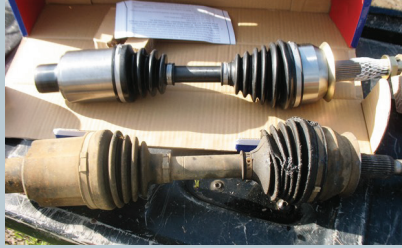


TrakMotive™ Tech Bulletin

CV Axle Installation Tips - Avoid These Costly Mistakes

1. Prior to installation, make sure to physically match the replacement unit with the original unit. Sometimes replacement units may not appear the same as the original unit, but will function properly. Pay close attention to:
 - a. Overall compressed length
 - b. Inner and outer joint stub length and spline count
 - c. Inner and outer seal diameters



2. **Note:** Certain vehicles (Ford and Subaru) require special tools for removal and installation of the outer joint in the wheel hub.

3. Check the transmission fluid for discoloration, a burnt smell, or contamination. Also carefully examine the transaxle seal. Replace the fluid and seal if necessary.



4. Axles with ABS applications **MUST** be handled with extreme caution. There is a sensor ring around the outer joint that will cause the ABS system to malfunction if damaged.



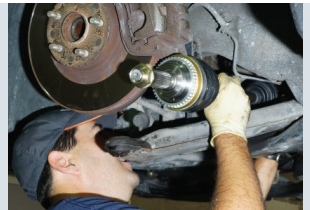
5. Any axle with a circlip on the inner spline should be carefully inspected to ensure no metal pieces / fragments remain in the differential.



6. If the inner joint of an axle was pulled apart, has a ripped or stretched boot, check the condition of the motor mount, all suspension parts, carriage/motor/transmission alignment and unibody or frame damage.



7. After installing a circlip type axle into the transmission, check to ensure the axle is properly seated in the transmission by pulling gently on the inboard housing.

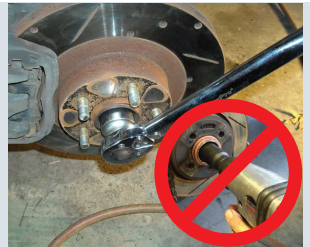


8. When installing all CV Axles, **DO NOT** let them hang from the differential/transaxle at any time during installation. The added stress can damage the inboard joint, causing the axle to not function properly.



- a. **Note:** Most Chrysler applications have a spring loaded inboard joint instead of the snap-ring style to lock into the transmission. Hanging the axle on these applications will cause the inboard joint to come apart inside transmission housing, resulting in axle failure.
- b. This also applies to Audi, VW, and Toyota applications with cross groove style inboard joints that will fall apart if hung from the differential/transaxle.

9. Always torque the spindle nut to the proper OE specifications. **CAUTION:** Do not use power tools to torque the spindle nut! You can damage the threads as well as the outer cv joint and will void the warranty!



If you need further assistance, contact our Tech Department from 8:00am to 4:30PM CST at 417.831.1804 or toll free at 855.831.9444.

TrakMotive™

United States Distribution Center: Advanced Innovative Technology Corp., 2830 N. Oak Grove Ave., Springfield, MO 65803
Canadian Distribution Center: AIT Automotive Canada Inc., 6180 Ordan Dr., Mississauga, ONT L5T 2B3

TrakMotive.com



417.831.9444
905.670.1502