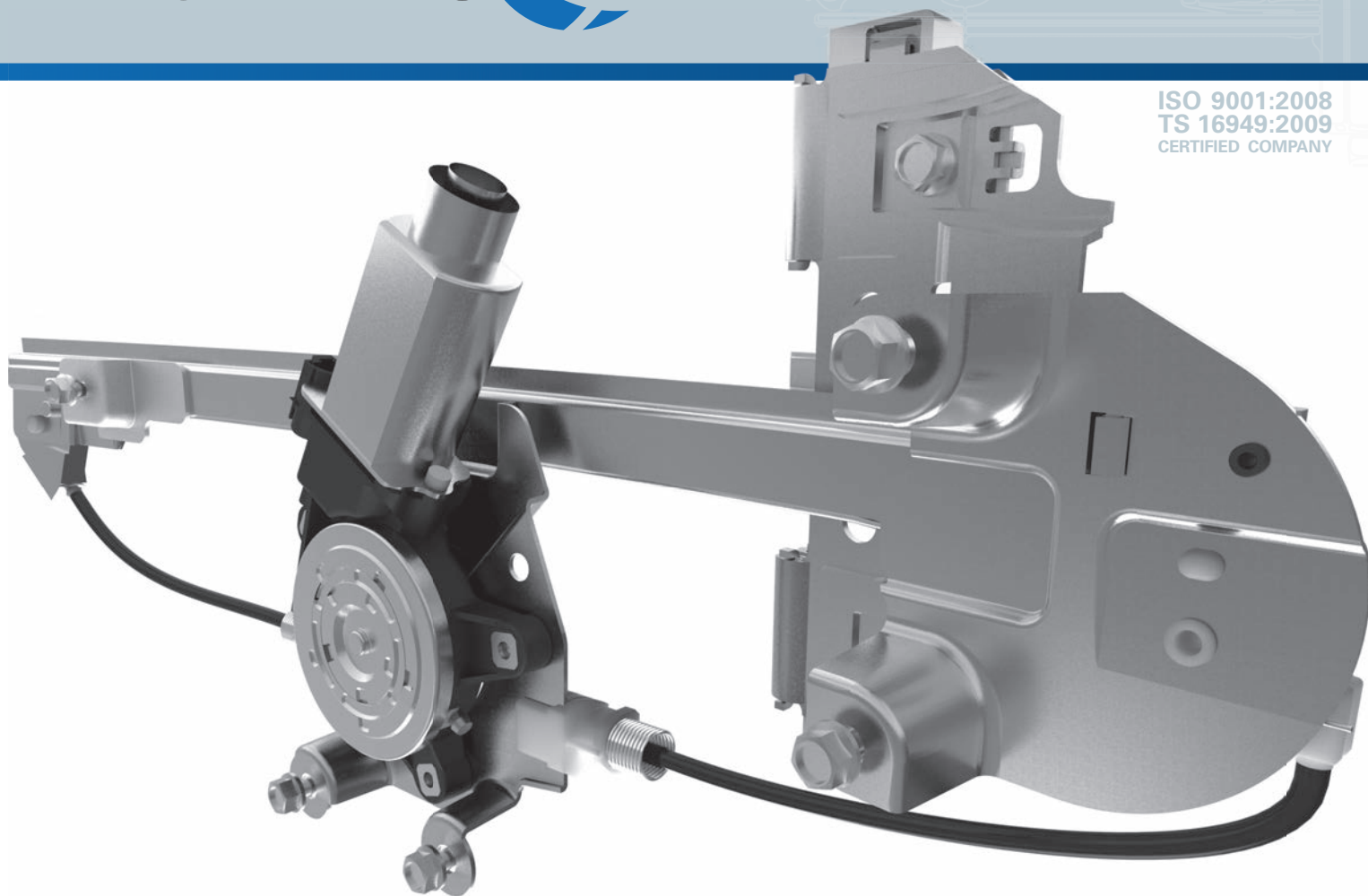




ISO 9001:2008  
TS 16949:2009  
CERTIFIED COMPANY

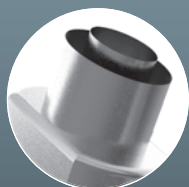


# WINDOW REGULATORS

IMPROVING ON THE OEM DESIGN



Self  
Lubricating



Anti Pinch



Premium  
Parts



Perfect Fit



Plug & Play

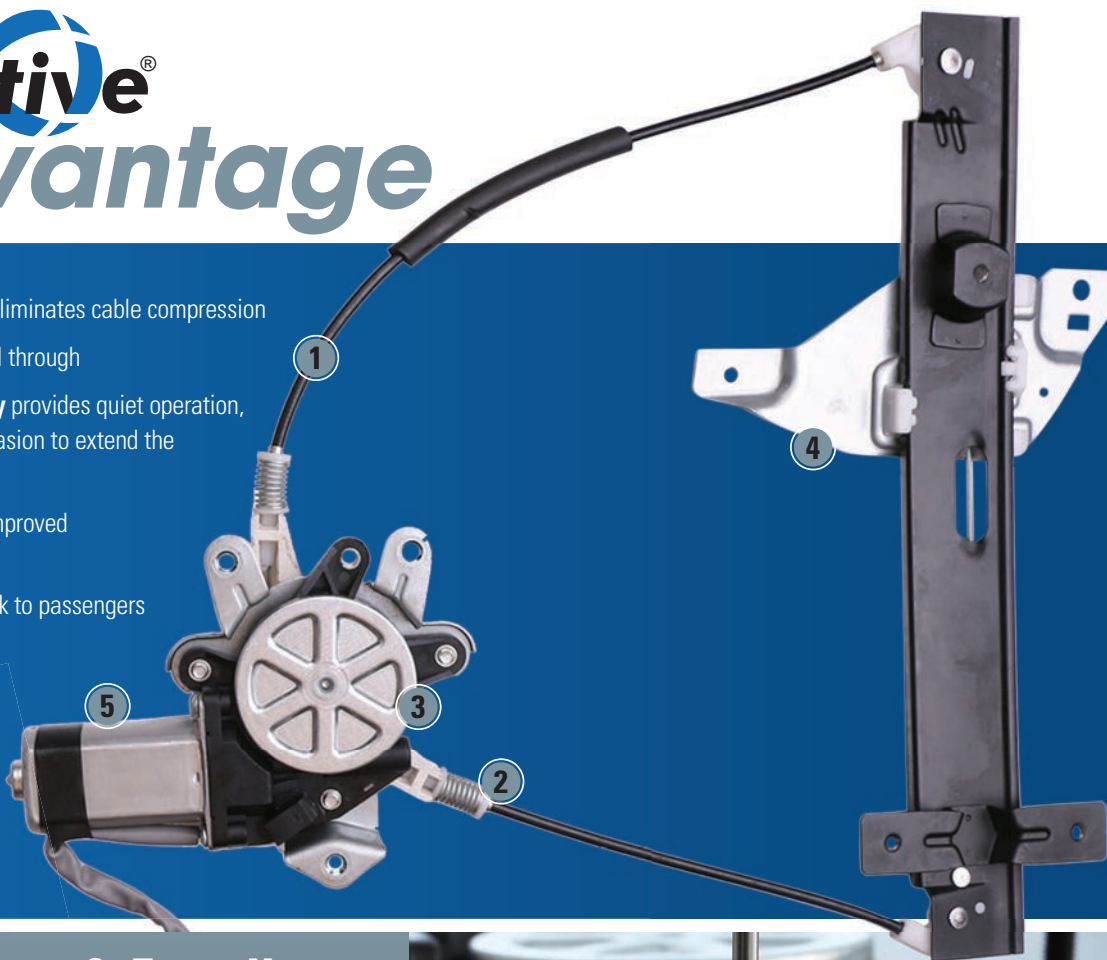
## MAXIMIZE YOUR R.O.I. WITH TRAKMOTIVE

**MORE COVERAGE**  
WITH FEWER SKU'S

**COMPREHENSIVE COVERAGE**  
DOMESTIC & IMPORT APPLICATIONS

# TrakMotive® Advantage

1. **Premium Cable Sheathing** eliminates cable compression
2. **Steel Capped Ends** resist pull through
3. **Self-Lubricating Technology** provides quiet operation, while reducing friction and abrasion to extend the lifespan of the motor
4. **Premium Quality Parts** for improved reliability and durability
5. **Anti-Pinch Motor** reduces risk to passengers
6. **OE Plug & Play Harnesses**  
No wire splicing required



## Perfect Fit, Form & Function

Achieved through 3D coordinate measuring technology

- Stringent testing
- Meets or exceeds all OE quality standards in fit, form and function



## Premium Motor Design

Built with special high-strength, temperature resistant materials that ensure long-life in the harshest conditions

- Magnetic shoes & Morgan brushes
- Water-proof film & Omron thermal protector

## Extensive Testing

Each window regulator undergoes rigorous tensile testing to ensure no wire separation occurs.



**United States Distribution Center:** Advanced Innovative Technology Corp., 350 Nevada Street, Redlands, CA 92373  
**Canadian Distribution Center:** AIT Automotive Canada Inc., 6180 Ordan Dr., Mississauga, ONT L5T 2B3

[TrakMotive.com](http://TrakMotive.com)

**800.567.1608**  
**905.670.1502**